

MADONNA DI  
**CAMPIGLIO**



**TRENTINO**

**45° INTERNATIONAL SKI ALP RACE DOLOMITI DI BRENTA  
ISMF FINALI COPPA DEL MONDO SCI ALPINISMO**

**MADONNA DI CAMPIGLIO 3-6 aprile 2019**  
**ISMF SKI MOUNTAINEERING WORLD CUP FINAL**

**infrant**

**STIHL**

**WURTH  
MODYF  
WORKWEAR**

**Marlene®**  
DAUGHTER OF THE ALPS

**MONTURA**  
the Engineering Group

# INDIVIDUAL RACE

Saturday, 6<sup>th</sup> April 2019

This presentation will be available on:  
[www.campigliodolomiti.it/ismfworldcup](http://www.campigliodolomiti.it/ismfworldcup)

## JURY:

**President of the Jury:** Monika STROJNY

**International Referee:** Kang HUA

**ISMF Tech Delegate:** Stefano MOTTINI

**Race Director:** Adriano ALIMONTA

**Trail Director:** Mauro MAFFEI

**General Event Manager:** Roberto CAVALLO

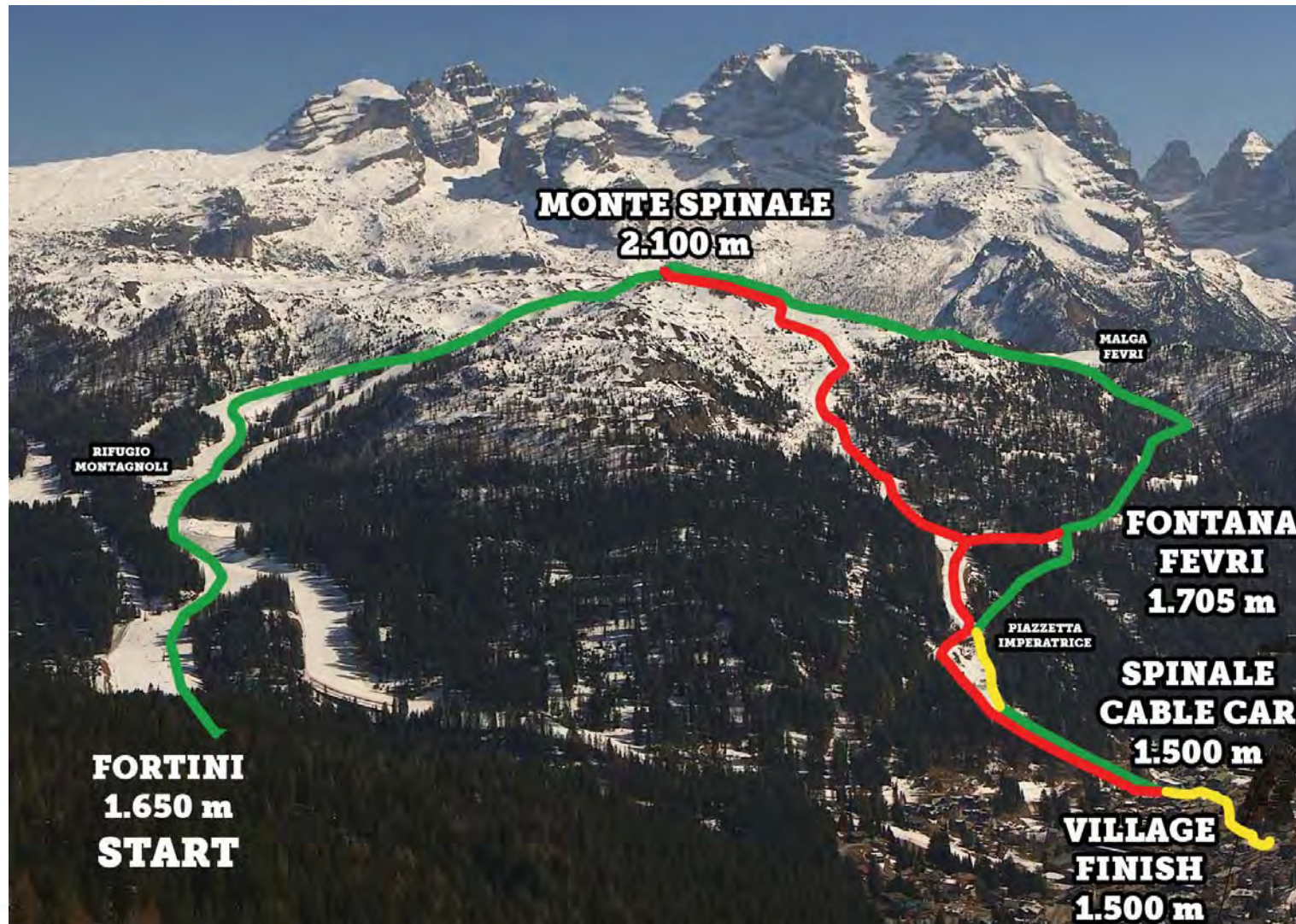
**National Referee:** Laurent PERRUCHON

Fabio LOMAZZI

## WEATHER AND SNOW CONDITION:

Weather:	Cloudy -
Temperature:	- 4° / 8°
Wind:	5/10 Km/h
Avalanche risk:	3
Type of snow:	Wet snow







## SENIOR MEN

Total Difference of height  
1.670 m

1<sup>st</sup> uphill:

Fortini 1.650 m

Monte Spinale 2.104 m

2<sup>nd</sup> uphill:

Spinale cable car 1.500 m

Monte Spinale 2.104 m

3<sup>rd</sup> uphill:

Spinale cable car 1.500 m

Monte Spinale 2.104 m





**SENIOR WOMEN****JUNIOR MEN**

Total Difference of height  
1.458 m

**1<sup>st</sup> uphill:**

Fortini 1.650 m

Monte Spinale 2.104 m

**2<sup>nd</sup> uphill:**

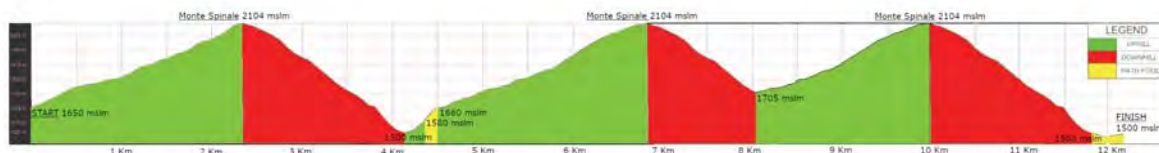
Spinale cable car 1.500 m

Monte Spinale 2.104 m

**3<sup>rd</sup> uphill:**

Fontana Fevri 1.705 m

Monte Spinale 2.104 m





## JUNIOR WOMEN

Total Difference of height  
854 m

1<sup>st</sup> uphill:

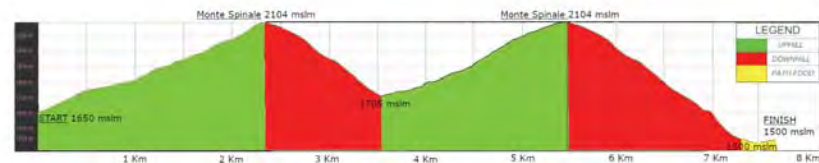
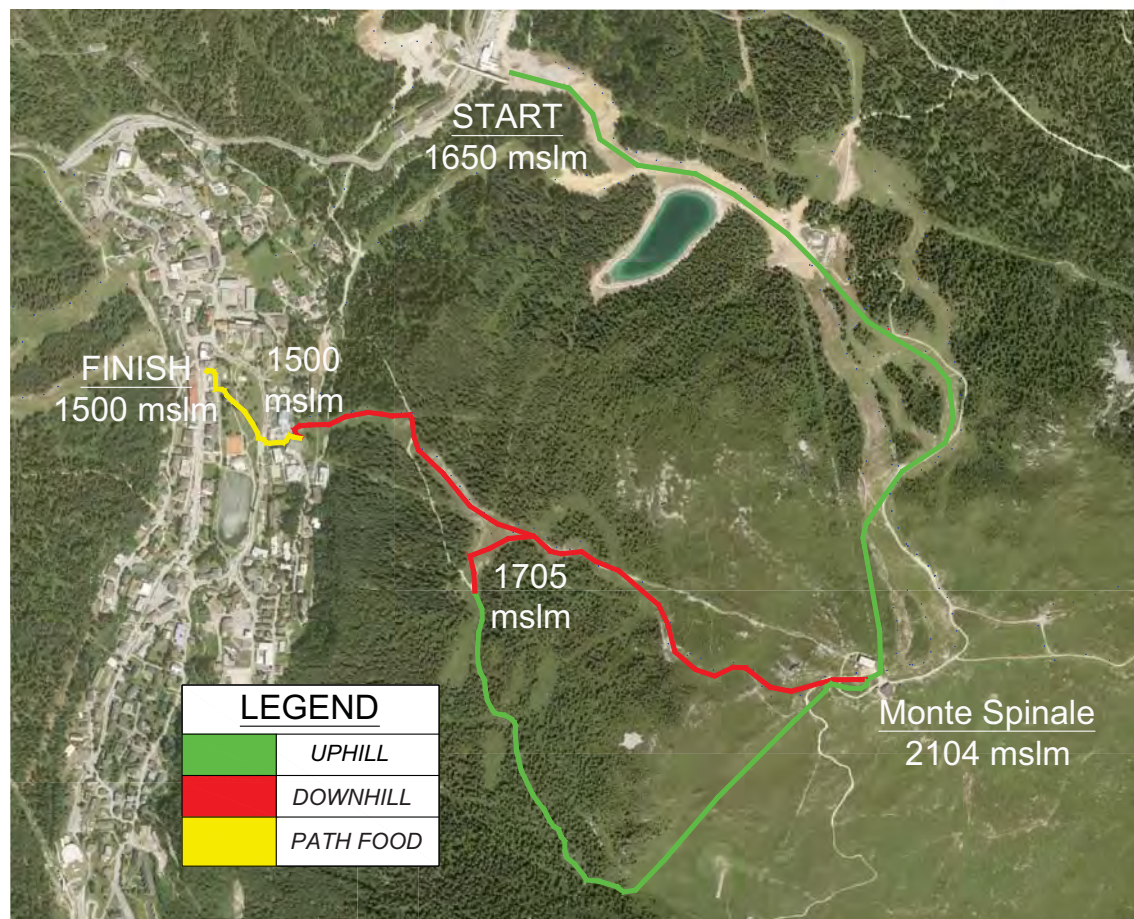
Fortini 1.650 m

Monte Spinale 2.104 m

2<sup>nd</sup> uphill:

Fontana Fevri 1.705 m

Monte Spinale 2.104 m





SM



SW - JM



JW





**45° INTERNATIONAL SKI ALP RACE DOLOMITI DI BRENTA**  
**MADONNA DI CAMPIGLIO 3-6 aprile 2019**  
**ISMF SKI MOUNTAINEERING WORLD CUP FINAL**

infront

STIHL

**WURTH**  
**MOODYE**  
 WORKWEAR

*Marlene*  
 DAUGHTER OF THE ALPS

**MONTURA**



## EQUIPMENT:

- Passport or ID card
- Bib number and chip
- Skis
- Bindings
- Boots
- Ski poles
- Skins (one pair min.)
- Helmet
- Goggles or sunglasses or visor
- Gloves
- Rucksack
- 3 layers up
- 2 layers down
- DVA
- Snow Shovel
- Snow Probe
- Survival blanket
- Whistle

## BIB NUMBER AND CHIP:

Rucksack

Right thigh



Chip



## RACE PROGRAM

08:00	Start Junior Women
08:15	Start Senior Women
08:30	Start Junior Men
08:45	Start Senior Men
10:15	Flower Ceremony SW - JW
10:30	Flower Ceremony SM - JM

## SPINALE CABLE CAR FREE APERTURE

07:00 – 08:00 for team and public

## PRIZEGIVING CEREMONY

Saturday 6<sup>th</sup> april at 2:00 PM

PalaCampiglio 2<sup>nd</sup> floor

## PARKING

Free parking is available at the starting area **FORTINI:**

Groste parking free entry with this voucher



Free parking at the prize giving ceremony venue at **PALACAMPIGLIO:**  
underground parking “Spinale”, enter collecting the normal ticket and  
exit with the free exit ticket.

**COLLECT THE FREE EXIT TICKETS AND THE PARKING PASS  
AT THE RACE OFFICE**



## RESULTS:

Results will be visible on notice board located in the finish area

## SPECTATOR AREAS:

At the Starting areas at Fortini, Monte Spinale and at the finish area.

Along the course, spectator areas are organized and supervised by rescue teams. The LOC must ensure the safety of the spectators;

## TEAM INFO:

Refreshment point LOC Monte Spinale and Spinale Cable Car.

Refreshment point and changing materials reserved for coaches Fontana Fevri and Spinale Cable Car.

In case of anti-doping control, the chaperons will accompany the athletes, where the control will take place.

**EMERGENCY +39 337 509940**



Thank you for your attention!